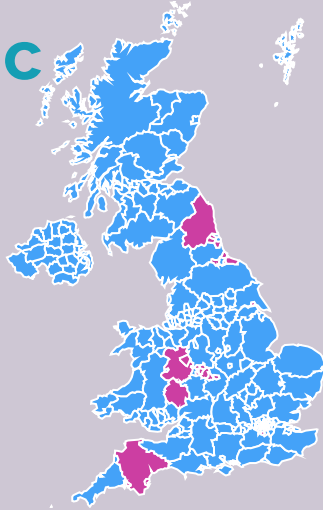


Social return on investment

£ 5.80

for every £1 invested

Geographic Area

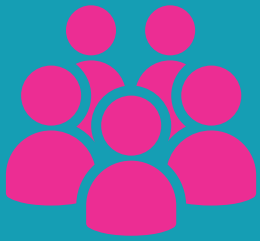


99%

of participants stated they benefited from the course

98.4%

of participants stated that the course met their specific needs



No of participants

1,028

with diabetes

26%

with pre-diabetes

74%



39%



61%



Average sustained weight loss (kg) after 12 months

with pre-diabetes

1.32

with diabetes

1.98

HbA1c

(mmol/mol)

Mean

pre-diabetes reduced by

-3.35

diabetes reduced by

-9.19